

## Ear Cleaning

Start with the quality ear cleaning solution that we have provided you. Never use water or hydrogen peroxide as they may leave moisture in the ear that can cause an infection.

☉ Lift the earflap and fill the canal as if it were a funnel



☉ Massage the canal to work the debris loose. Put one finger in front and at the base of the earflap, and put your thumb behind and at the base. A squishing sound tells you that the cleaner has gone into the horizontal canal.



☉ Let your pet sit up and shake their head a few times. This will help release the softened wax and other debris.

☉ Take a tissue or cotton ball and wipe the canal as deep as your finger can reach without forcing. Repeat until clean.



Never use cotton tipped applicators or anything smaller than your finger tip.

## Instructions

Date: \_\_\_\_\_

Pet Name: \_\_\_\_\_

### Instructions for Medication:

Apply \_\_\_\_\_

As directed on the bottle.

Please return for the doctor to re-examine the ears in \_\_\_\_\_ days.

### Instructions for Cleaning:

Clean the ears \_\_\_\_\_ daily/weekly or after bathing or swimming to maintain healthy ears. If at anytime your pet shows signs of discomfort while cleaning the ears or you see signs of infection (odor, excessive material) please contact the hospital for an appointment with the doctor.



2400 Waukegan Road  
Glenview, IL 60025  
847-724-4812



## Ear Care

### Medicating and Cleaning

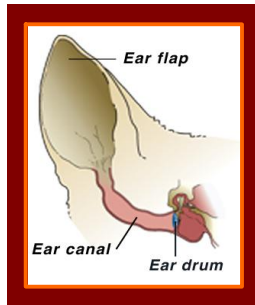


2400 Waukegan Road  
Glenview, IL 60025  
847-724-4812

*Dedicated to providing  
compassionate & comprehensive  
care for your pet*

# Medicating Ears

Please follow the recommended instructions for medicating or cleaning your pet's ears. In some cases we will ask that you do both. If at any time you have questions, please do not hesitate to contact one of our technicians for assistance.



## Ear Medication:

It is important to get the medication into both the vertical and horizontal portion of the ear canal. Unlike our ear canal, the dog's and cat's external ear canal is "L" shaped. The vertical canal connects with the outside of the ear and is the upper part of the "L". The horizontal canal lies deeper in the canal and terminates at the eardrum. Our goal is to administer the medication into both parts of the canal.

## Applying Medication

☞ Gently pull the earflap straight up and hold with one hand.



☞ Insert the tip of the medication bottle into the ear canal. While gently squeezing the bottle, slowly remove the bottle from the ear canal depositing the medication into the horizontal and vertical ear canal.



☞ Put one finger in front of and at the base of the earflap, and put your thumb behind at the base. Massage the ear canal between your finger and thumb.



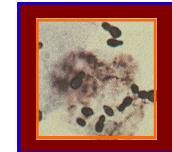
☞ Release the ear and let your dog or cat shake it's head. Many medications contain a wax solvent and you may observe debris leaving the ear as your pet shakes it's head. Lots of praise and treats can help make this a more enjoyable time.

## Causes and Prevention

There are many variables that can lead to ear infections. When there is a suspected infection, the doctor will use a swab to take a sample to examine under the microscope. What we are looking for is an indication, and if the infection is caused by a bacteria, yeast or possibly a mite.



Ear Mite



Budding Yeast

Once the acute cause of the infection has been identified, the doctor will prescribe the appropriate medication.

Although it is felt that dogs with floppy ears are more prone to infection, it is now understood that the majority of ear infections are due to underlying allergy conditions. They include contact, inhalant and food allergies. When chronic ear infections occur, we often try to isolate the allergen. This is often difficult at best. Our veterinarians may recommend a diet trial and or desensitization to prevent chronic, recurring ear infections.